

Summit CWMA High Elevation Garlic Mustard Control Program

February 2026

Prepared By: Sara Jo Dickens, PhD.
Ecology Bridge LLC



Boo Radley Art Park Trails in 2024 (Left) and in 2025 (Right) following volunteer efforts mid-season. Percent cover of garlic mustard was already 80% lower in 2025 due to previous years treatment before volunteers removed all remaining flowering plants.

PROJECT DESCRIPTION

The High Elevation Garlic Mustard Control Program targets garlic mustard (*Alliaria petiolate*), a Class 1B state-listed noxious weed, to restore natural ecosystems and protect forests, shrublands, and tributaries in the Weber River and Salt Lake County watersheds.

The project area spans private and public lands where residential and ski resort properties border locally and federally owned open space. This proximity to vast wildlands makes early detection and rapid response (EDRR) critical for protecting forest and watershed health, and wildlife habitat quality. The wildland-urban interface (WUI) presents unique challenges for noxious weed control, particularly the thousands of small privately owned lots (.2-1 acre) and extensive recreational trail system lining the forest edge. Effective garlic mustard control in these areas requires substantial outreach and partnerships.

This integrated weed management program combines outreach, hand weeding, mulching, herbicide application, vegetation thinning, and revegetation.

ArcGIS Field Maps is used to map garlic mustard populations and other priority noxious weeds while

documenting treatment details including percent cover, growth stage, control methods, herbicide rates, and responsible contractors or partners. The app is also used to record areas monitored and facilitate efficient use of herbicide crews. Revegetation may be implemented once garlic mustard cover drops to approximately 20% or less, with site-specific methods determined by ecological conditions, plant communities, and accessibility.

With most Summit County garlic mustard on private land and widely distributed, outreach and education are critical. The Summit CWMA holds annual trainings, hosts volunteer events, and provides factsheets and resources to residents through the CWMA website, social media and volunteer programs:

Garlic Mustard Games

A summer-long series of community weed pulls that incentivizes participation through events, trail-side stations with signage,



Garlic Mustard Games trailside volunteer station at the entrance to the Crescent Ridge HOA opens space.

TREATMENT METHODS

Inventory/Monitoring and Mapping

Inventory and monitoring help locate new noxious weed populations, evaluate growth, assess treatment success, and identify retreatment needs. Mapping with ArcGIS Field Maps maintains records of weed distribution, status, and treatment actions over time. Data is updated in EDDMaps as resources allows.

Manual Control

In dense patches, flowering plants are removed to thin the canopy, allowing better herbicide application to remaining second-year and first-year plants. In small and backcountry patches, both flowering and rosette stages are weeded.

Herbicide Treatment

Three herbicides are typically used, selected based on environmental conditions, land use, and applicator. Application rates are tailored to specific locations and sensitive individuals or resources.

2, 4-D (Amine): 64oz/ac, MSM 60: 1.5oz/ac or Aquaneet: 2qt/ac

Vegetation Thinning

Riparian areas and dense shrub growth are thinned of dead or unhealthy vegetation to improve crew access. This work uses hand tools and small chainsaws, with wood chipped and reused on site when possible.

Revegetation

Seed mixes consist primarily of native bunch grasses, with wildflowers added when appropriate. In aspen forest, oak woodland, and dry shrubland, compost and biochar are often applied before seeding to improve soil moisture retention.

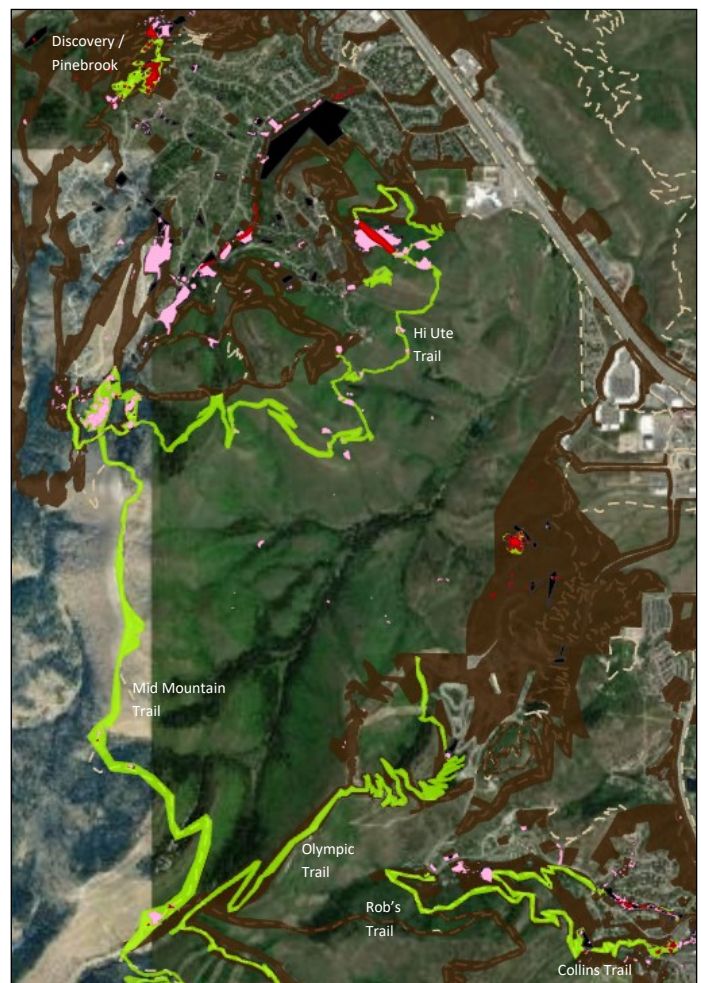
opportunity drawings, and an annual food truck party for top volunteers. The program increases hand-weeding in high-priority areas, reduces herbicide use in sensitive habitats, and educates participants about noxious weed impacts.

Noxious Weed Ambassador Program

Encourages self-motivated volunteers to remove all species of noxious weeds from local open space and trail systems. Stations provide signage with weed photos and descriptions of control methods. QR codes allow volunteers to enter biweekly prize drawings. The CWMA collects bags, tracks pounds removed, and shares progress on social media.

TREATMENT RESULTS

In 2025, 123 acres were inventoried and 249 acres monitored for garlic mustard. Inventory priorities included the western Pinebrook HOA boundary, the Midmountain trail connecting Pinebrook to Canyons Resort, the entire Hi Ute trail, the eastern Snow Ranch boundary adjacent Thayne's Canyon, and several Park City Mountain trails (Mother Urban, Moosehouse, Grave Digger, and portions of John's 99, 4:20, Little Chief, Little Chief to Empire Link, John's and King Road Connector).



Trails inventoried for garlic mustard in the Pinebrook through Sun Peak Areas in 2025. Brown = inventory and monitoring in previous years, green = 2025 inventory and monitoring, Pink = garlic mustard, red = treatment.

HIGH ELEVATION GARLIC MUSTARD ISM GRANT 2025 QUICK SUMMARY



13 Years
of funding
Garlic Mustard
Mapping and
Control

Fiscal Agent
Summit County



Project Manager
Ecology Bridge



Revegetation
0 Acres Reseeded



Research
3 Transect, 1 Research Project



10 Years
Using spring
and fall
treatments



8 Years
Thinning with
weeding
pre-herbicide



**5th ANNUAL
GARLIC MUSTARD GAMES**



123 ac INVENTORIED



249 ac MONITORED



166 ac HAND WEEDING (Significant volunteer efforts)



163 ac HERBICIDE



64 VOLUNTEERS



7 EVENTS, 13 STATIONS



5,084 POUNDS

** Includes High and Low Elevation Program areas

A few small populations were found on Midmountain trail between Pinebrook and Canyons Resort. Several small populations were discovered on Hi Ute trail, with larger populations near the trail's base on Ecker Hill Middle School and Hi Ute properties. Surprisingly, only a few small populations were found in the Park City Mountain area despite its proximity to the heavily invaded Armstrong areas.

Monitoring priorities included fire treatment areas in Summit Park Open Space, No Worries trail, portions of Toll Canyon and Collins trails, Rob's trail, Armstrong trail and old ranch access road, Dawn's trail, Seldom Seen Trail, Onteros Ridge and Daily Ave roads, Rossi Hill open space, and forested areas on Treasure Hill that received recent fuels reduction treatment.

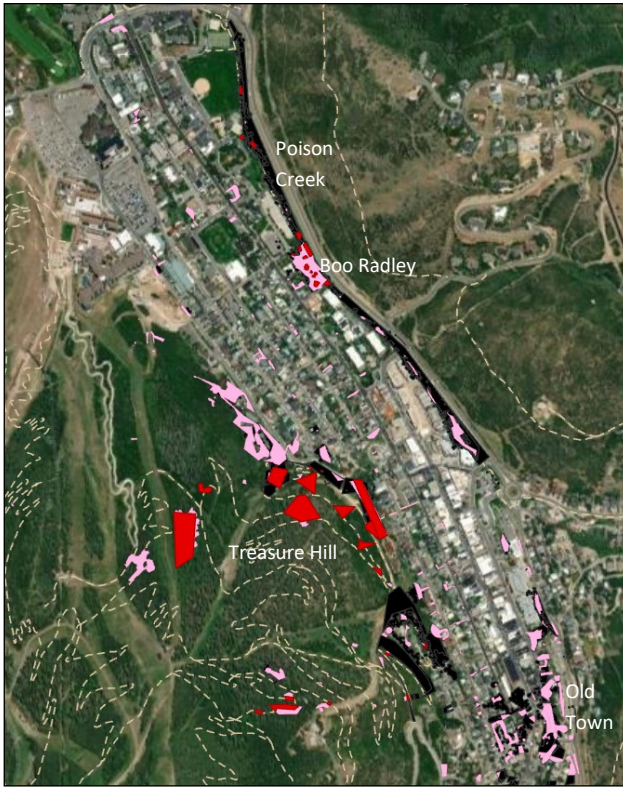
Summit Park and Timberline communities contain the largest combined residential garlic mustard population on private property in Summit County. Thayne's Canyon and Old Town Park City may be equally infested based on roadside monitoring, but low resident participation prevents accurate mapping. In Summit Park and Toll Canyon, garlic mustard on public and private lands

continues declining where consistently treated, with limited spread from residential areas to open space. Maintaining this invasion line between the residential parcels and the open space and Salt Lake Watershed remains a high priority.

In Pinebrook HOA, garlic mustard along the main creek continues declining in size and density.



Populations of garlic mustard were observed covering large areas within the Ecker Hill Middle School forest and adjacent Ute Ranch forested lands.



Old Town Park City and adjacent open space is experiencing a decline in garlic mustard overall, however progress is not contiguous preventing lasting progress from being made in residential areas.

Populations along the perimeter trail system adjacent to public lands were observed to have spread during 2024 monitoring, though additional 2025 monitoring found only a few new populations.

Garlic mustard populations below Utah Olympic Park continue declining, though a few historic populations reemerged and were treated in 2025.

Sun Peak HOA's main creek corridor shows continued decline, but garlic mustard is spreading in adjacent forested open space where fire mitigation recently occurred. Similar increases are occurring in the neighboring Enclave HOA following fuels reduction work.

The Armstrong population remains the largest continuous garlic mustard infestation on public open space in Summit County at 57 mapped acres and an additional 8 acres in Crescent Ridge and adjacent residential land. Once-large continuous populations are now receding into small disconnected patches. With a one time General Obligation Bond fund for open space preservation, Park City will be funding the remapping of

this area along with treatment in 2026 before fall fuels mitigation work. This updated data will show how effective control efforts have been and where future focus needs to be to continue reducing these populations and prevent their spread.

Southern Crescent Ridge HOA open space continues to have dense, continuous garlic mustard cover. The northern portion and the adjacent Glenwood Cemetery, where treatment and Garlic Mustard Games have occurred for five consecutive years, show rapid density decline.

Populations of Treasure Hill expanded in 2024 following fuels reduction treatment of the forest and oak woodlands. No further spread was detected in 2025 and all garlic mustard populations within the fuels treatment were treated. In Old Town Park City, pockets of residential areas and the edges of open space have receding garlic mustard populations, however connectivity of these declining areas is still lacking and garlic mustard continues to dominate many residential properties. City lands in the area that have had consistent treatment are showing considerable progress. Only 15% of the original garlic mustard populations along Poison creek, one of the longest treated areas in our program area, remains after just under 20 years of treatment. Reseeding efforts have helped reduce bare ground and reinvasion on the sunnier sections of the Creekside and associated trail



The Canyons Golf Course riparian thinning and garlic mustard control site had some Dyers woad invasion, however garlic mustard is reduced and native species are dominant.

PROJECT PARTNERS

We would like to thank all of our partners and sponsors for their contribution to this program. Thanks to the Utah Department of Agriculture and Food for funding this project.

Summit CWMA Partners

Ecology Bridge: Sara Jo Dickens

Summit County Weed Dept: Dave Bingham and Dan Pena

Summit County Lands & Natural Resources Dept: Jess Kirby

Summit County Stormwater Dept: Kelsey Christiansen

Snyderville Basin Special Recreation District: Maddie Nelson

Park City Municipal Corporation: Logan Jones, Hannah Halsted, David Jenkins, Adam Smath

Deer Valley Resort: Laura Sexton and Paul Hedman

Canyons Golf Course: Scott Norden

Vail Resort: Lynne Offret, Toph White

Crescent Ridge HOA: Mark Wilke

Pinebrook HOA: Don Brown, Stephan Herrera, John Tracy

Summit Park HOA: Mike Quinones

Utah Olympic Park: Jamey Kimball

Utah State University Extension: Elizabeth Cohen, Wesley Crump

Mountain Trails Foundation: Rick Fournier, Ian Hartley

Recycle Utah: Carolyn Wawra

Park City Noon Rotary Clubs: Insa Riepen

Park City Sunrise Rotary Clubs: Brooke Ahlberg

KPCW: Claire Wiley

Additional Sponsors

All Seasons Adventures

Arcade Belts

Dakine

Oleus

Ol' Miner Express Car Wash (GB)

Swaner Preserve and EcoCenter

Park City Film

Ritual

Salt Lake Brewing Company

Savoury Kitchen

Silver King Coffee

system. The Boo Radley Art Park adjacent the Poison Creek trail continues to have a large population of garlic mustard however the percent cover is consistently less than 20% rather than the 80-100% cover that was there

prior to initiation of treatment approximately five years ago. The forest and oak woodland floors of the Prospector trailhead area, in southern Park City, was once dominated by garlic mustard. Garlic mustard cover is now patchy covering less than half its original area with percent cover rarely greater than 30%. Aggressive treatment following fire mitigation work two years ago made significant progress reducing garlic mustard in areas that had previously been difficult to walk through. This intentional pairing of garlic mustard treatment with fire mitigation treatments has proven to prevent spread and even accelerate control results. Where pairing of these treatments has not been intentional, garlic mustard has spread unnoticed by fuels crews. Populations of garlic mustard in fuels treatments along Pinebrook Creek and those on Treasure Hill that weed crews discovered a year after fuels treatments are examples of such unintended results. These results highlight the value of collaboration between differing land management programs.

A total of 329 acres were treated in 2024 (166 ac hand weeded and 163 ac treated with herbicide). Many garlic mustard populations had limited flowering plants in 2025 and areas with long-term treatment often had few rosettes. Rosette density was, however high in some of the known larger populations. Treatment was focused to address some of these larger populations, particularly near the farthest extent of garlic mustard invasion westward, along with streams and trails to prevent seed spread. Herbicide treatment again focused on areas with dense rosettes and following hand weeding, particularly weeding done by volunteers.

Areas focused on for treatment in 2025 included the Toll Canyon Open Space and the Summit Park Open Space garlic mustard populations where Snyderville Basin Special Recreation District pays for the majority of both hand weeding and herbicide application. The Pinebrook Creek and Sun Peak Creek, all populations in the PRI trail system near the Olympic Park, Canyons Golf Course riparian habitat, Rotary Park, Poison Creek and portions of the Armstrong trail, were treated with a combination of hand weeding and herbicide treatment. The Treasure Hill and Prospector Trailhead area and the single garlic

mustard population known on Bonanza Flat were treated with herbicide alone.

Revegetation

No seeding occurred in 2025. Many of the areas previously treated such as the No Worries Trail, Pinebrook Creek, Rotary Park, Poison Creek and Prospect trailhead had either healthy native bunchgrasses starting to establish and/or natural recruitment of native species is occurring.

Transects

The Upper Evergreen site (Summit Park) is maintaining near 10% or less garlic mustard cover, while garlic mustard at the Toll Canyon site has increased but remains below 20% cover and is primarily small rosettes. Flowering plants continue to account for the majority of plants at the Upper Evergreen site.

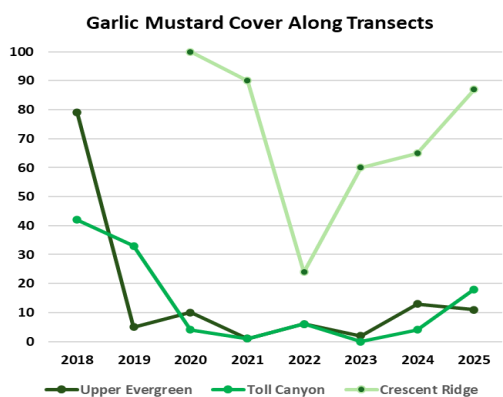
The Crescent Ridge HOA transect has returned to greater than 80% cover since it was at its lowest cover (24%) in 2022. This dramatic recovery of garlic mustard is the result of a change in management that led to two missed years of herbicide treatment at the site. In 2025, the new HOA manager was able to spray the majority of the HOA open space, however the garlic mustard cover is thick enough that it will likely take several years to regain the progress previously made unless hand weeding is

also incorporated to make herbicide applications more effective. While the Crescent Ridge HOA is a Garlic Mustard Games location, resident participation is low except during the one event held there annually. The property is too big for a single event to thin the dense flowering plants enough to maximize follow up herbicide treatments alone. The HOA is committed to continued treatment and the CWMA will continue to hold one event there annually and monitor the site.

Organic Herbicide Trial

The organic herbicide trial testing three organic herbicides and the most commonly used synthetic herbicides continued for a second year. For garlic mustard, we compared organics against WeedMaster, and for musk thistle and Canada thistle, we compared against Milestone. The organic herbicides included Captain Jack's Dead Weed Brew (Caprylic Acid 2.62%, Capric Acid 2.17%), Weed Pharm (Acetic Acid 20%), and Firehawk™ Bioherbicide (Nonanoic Acid 2.8%). Following label instructions, organic herbicides were sprayed three times with each treatment spaced 2-3 weeks apart. The synthetic herbicides were used according to their labels with two treatments per season, one in early summer and one in the fall.

Results in 2024 indicated that the organic herbicides may be effective on garlic mustard, musk thistle, and Canada



Garlic mustard along transects since 2018. Cover reflects whether control was consistent and recent peaks in garlic mustard due to favorable climate. Treatment where the Crescent Ridge transect is has not been consistent.





Bare organic trial plot prior to any 2025 treatment within a Canada thistle populations of Round Valley Open Space.

thistle, but they did not perform as well as WeedMaster and Milestone. However, impacts to Canada thistle were short-lived and plants began to recover after treatment.

In 2025, all the organic herbicide-treated musk thistle and Canada thistle plots were nearly bare with almost no target weeds present. The synthetic herbicide-treated plots had slightly higher target weed cover but also had more native cover. This unexpected result suggests that the organic herbicides acted as a preemergent and may have even killed established perennials in the spring of the second year. Given that the organic herbicides are considered post-emergent herbicides, this result is concerning. Additionally, Canada thistle did start to recover mid-season, indicating that long-term control of Canada thistle by the organic herbicides would require continued use and could result in additional impacts to soils.

Treatment effectiveness for garlic mustard in 2025 followed 2024 patterns, with all herbicides effectively controlling garlic mustard. The bare ground result was not present in the garlic mustard plots, where garlic mustard germinated with high cover (50-90%) and some native species remained present. The major site differences between the garlic mustard and thistle sites are a lack of tree canopy cover in the thistle sites and a significant duff layer present in the garlic mustard sites. We believe that the duff layer in the garlic mustard sites prevented the organic herbicides from reaching the soils, which prevented them from acting like a

preemergent as they had in the thistle plots.

While the organic herbicides were effective for all species to varying degrees, the impacts of these herbicides to the soils are concerning. Because organic herbicides are not required to meet the same rigorous testing requirements as synthetic herbicides, and because many companies fail to provide a complete list of the inactive ingredients, we are not comfortable recommending these herbicides to residents. The long-term impacts to soil health are unclear and could result in far greater impacts to natural resources than either the use of synthetic herbicides or the noxious weeds themselves.

Outreach

Participation in the Summit CWMA - Summit County annual noxious weed trainings continues to increase, 65 community members, trail crew staff and partner staff participants in 2025. An additional twenty plus

GARLIC MUSTARD SPREADING ON ARMSTRONG & SPIRO TRAIL

Local Trails
Garlic mustard

WHY IS GARLIC MUSTARD BAD?

- Outcompetes native plants
- Reduces wildlife habitat
- Increases wildfire risk

HOW DOES IT SPREAD?

- Seeds are tiny
- Spreads on bike tires, shoes & clothing

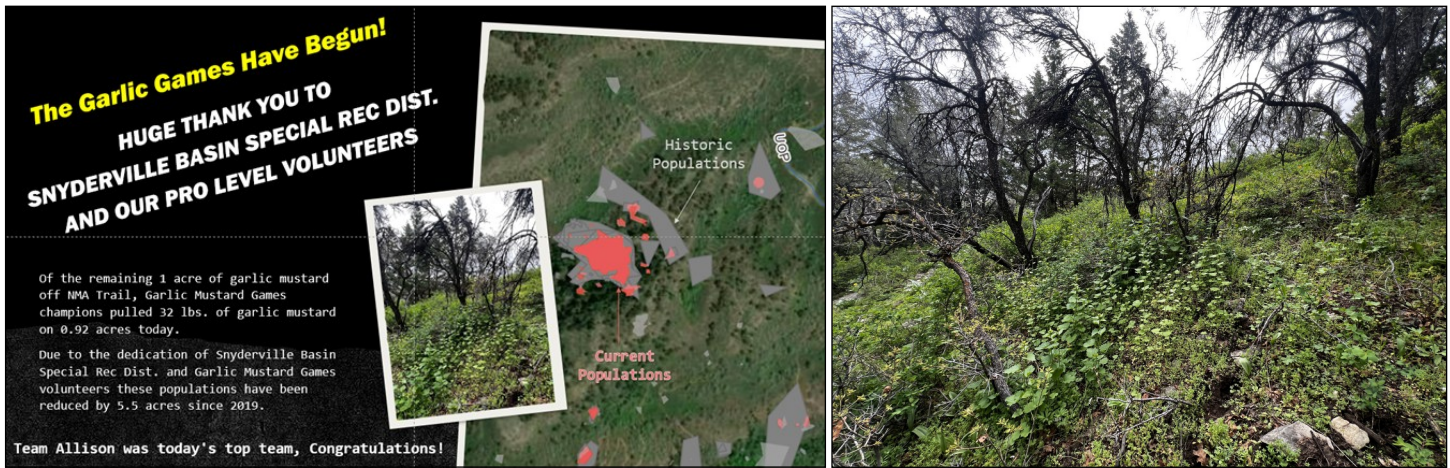
WHAT CAN WE DO?

- Identify it
- Don't stand or park a bike in it
- Clean your boots/bikes between hikes/rides
- PULL IT!

Garlic mustard flowering
Time to pull!

Garlic mustard with seed heads
Avoid!

One of three posters showing how recreationalists can help prevent spread of noxious weeds displayed at the Mountain Trails Foundation's Trails Mixer event spring of 2025.



Left: Post Garlic Mustard Games social media post for the PRI event held in partnership with Snyderville Basin Special Recreation District. Right: Many garlic mustard populations at PRI are more patchy with reduced cover.

participants attended a third weed training held in partnership with the Summit County Weed Division and the Summit County Lands and Natural Resources Department which aimed to train the community but also 910 Ranch volunteers.

The CWMA was invited to table at the Mountain Trails Foundation's annual Trails Mixer where hundreds of recreationalists came to learn about recreation opportunities and resources in Summit County. CWMA displays focused on the issue of recreational assisted weed spread and how trail users can prevent future spread and volunteer to address current weed populations. The CWMA also tabled at the Summit County Stormwater Departments annual Trails, Trash and Tunes community event which brings over 100 participants and at the Pinebrook HOA hosted Fire wise event for 5 HOA's where we educated approximately 50 residents about noxious weeds, control resources and the value of using native plants for landscaping. The CWMA appeared again on the local KPCW radio show, This Green Earth and was featured in the Park Record and Town Lift for receiving the Outdoor Recreation Stewardship Award in 2025 for the Garlic Mustard Games. The award celebrates organizations that implement innovative programs to increase volunteer participation in outdoor stewardship.

The Garlic Mustard Games continues to inspire volunteer participation. In 2025, 64 volunteers and 13 teams participated in 7 events and independently using trailside volunteer stations. A total of 5,084 pounds of

garlic mustard were pulled across the High and Low Elevation Garlic Mustard Program areas. The number of pounds pulled by crews and volunteers was much lower a result of fewer flowering plants in 2025. This didn't hinder volunteers as they turned their efforts into a treasure hunt for the few flowering plants and celebrated the progress they could visibly see.

Volunteers of the county-wide Ambassador Program pulled over 300 pounds of weeds which were collected across all of Summit County. Musk thistle, houndstongue and common burdock continue to be the most commonly pulled noxious weeds through this program. This year the program ran from June - September and only half the stations were installed due to funding limitations. That said, the Park City Sunrise Rotary Club helped to ensure this program ran even in its reduced capacity by providing some funding via their Community Grant.

An additional long-term outreach goal was achieved in 2025 as a result of CWMA collaboration with Pinebrook area residents. Two Pinebrook HOAs, Quarry Springs HOA and the Pinebrook Master Association -the main HOA responsible for the majority of Pinebrook open space - hired weed control contractors and have begun developing weed management plans. In January of 2026, a third Pinebrook HOA, Pinebrook Pointe, also began this process.

CONCLUSIONS

Containment of garlic mustard populations and reduced



Dense thistle and houndstongue that will be treated in 2026 under a new contract between Pinebrook Pointe and a local noxious weed management contractor.

population densities have continue to be achieved where treatment has been applied consistently. New populations of garlic mustard continue to be discovered in open space and in residential areas. With continued, consecutive treatment, garlic mustard can be contained and, in some areas, may even be eradicated; however, privately owned, residential property's and recreational trail systems continue to be our biggest, ongoing challenges.

While great progress was visible program wide during the majority of the 2025 growing season, late November germination rates were concerning. Precipitation in October was unusually high and combined with warm temperatures into November perfect germination conditions were present for garlic mustard. While extensive monitoring was not done that late in the season, quick site checks indicate not only dense germination in areas that showed persistent populations earlier in the season, but also sites that had not had garlic mustard for several years. With continued unusually warm whether intermittently through January, further germination has occurred making local land managers and the CWMA nervous that 2026 could be one of the biggest garlic mustard and other noxious weed years in over a decade.

FUTURE TREATMENT PLANS

In 2025, we will continue to use Arc Field Maps to map weeds, treatments and inventory. Treatment will continue to include manual and chemical control, restoration and outreach. Priorities in 2026 will be public open space and private lands adjacent to open space or major vectors of spread, with areas along the western invasion front and those getting close to eradication highest in priority.

FINANCIALS

In 2025, the Summit CWMA was awarded \$74,989.00 for the 2026 state fiscal year (July 1, 2024-June 30, 2025). Additionally, \$29,875.32 was carried over from the 2025 state fiscal year grant. Of the FY2026 ISM funding, \$47,124.70 remains to be applied to work conducted spring of 2026, which given late season germination rates could easily be used up on control alone. This grant was matched through partner in-kind donations. The total partner match was \$53,916.



Germinating garlic mustard on November 3rd in an area thought to be almost eradicated.

ISM Grant funded expenses for the 2025 growing season.

High Elevation Garlic Mustard ISM Expenses January 1 - June 30, 2025		
Line Item	Description	Invoiced Amount
Administration	Project Management, budgeting and reporting	\$ 2,628.94
Inventory	Inventory and mapping of garlic mustard	\$ 4,674.00
GIS Data Services	Management of GIS data and mapping apps	\$ 3,838.72
Outreach/ Education	Outreach and education program supplies and labor	\$ 4,282.67
Herbicide Treatment	Contractor applied herbicide treatment	\$ 9,849.34
Mechanical Removal	Hand removal of garlic mustard	\$ 2,525.96
Restoration	Supplies for revegetation, which are being saved for use in 2026.	\$ 39.50
Chemical	Herbicide provided to partners for in-house staff use	\$ 200.00
Equipment	Dump Trailer rental for collecting and hauling weed for garlic Mustard Games, Noxious Weed Ambassador Program and weeds residents pull and need help disposing of.	\$ 1,836.18
High Elevation Garlic Mustard ISM Expenses July 1 - Dec 30, 2025		
Administration	Project Management, budgeting and reporting	\$3,667.80
Inventory	Inventory and mapping of garlic mustard	\$3,295.20
Monitoring	Monitoring previously mapped garlic mustard populations and treatment effects.	\$160.80
GIS Data Services	Management of GIS data and mapping apps	\$739.68
Outreach/ Education	Outreach and education program supplies and labor	\$3,661.95
Herbicide Treatment	Contractor applied herbicide treatment	\$3,303.25
Mechanical Removal	Hand removal of garlic mustard	\$11,037.05
Equipment	Dump Trailer rental for collecting and hauling weed for garlic Mustard Games, Noxious Weed Ambassador Program and weeds residents pull and need help disposing of.	\$1,998.57
Total		\$ 57,739.61

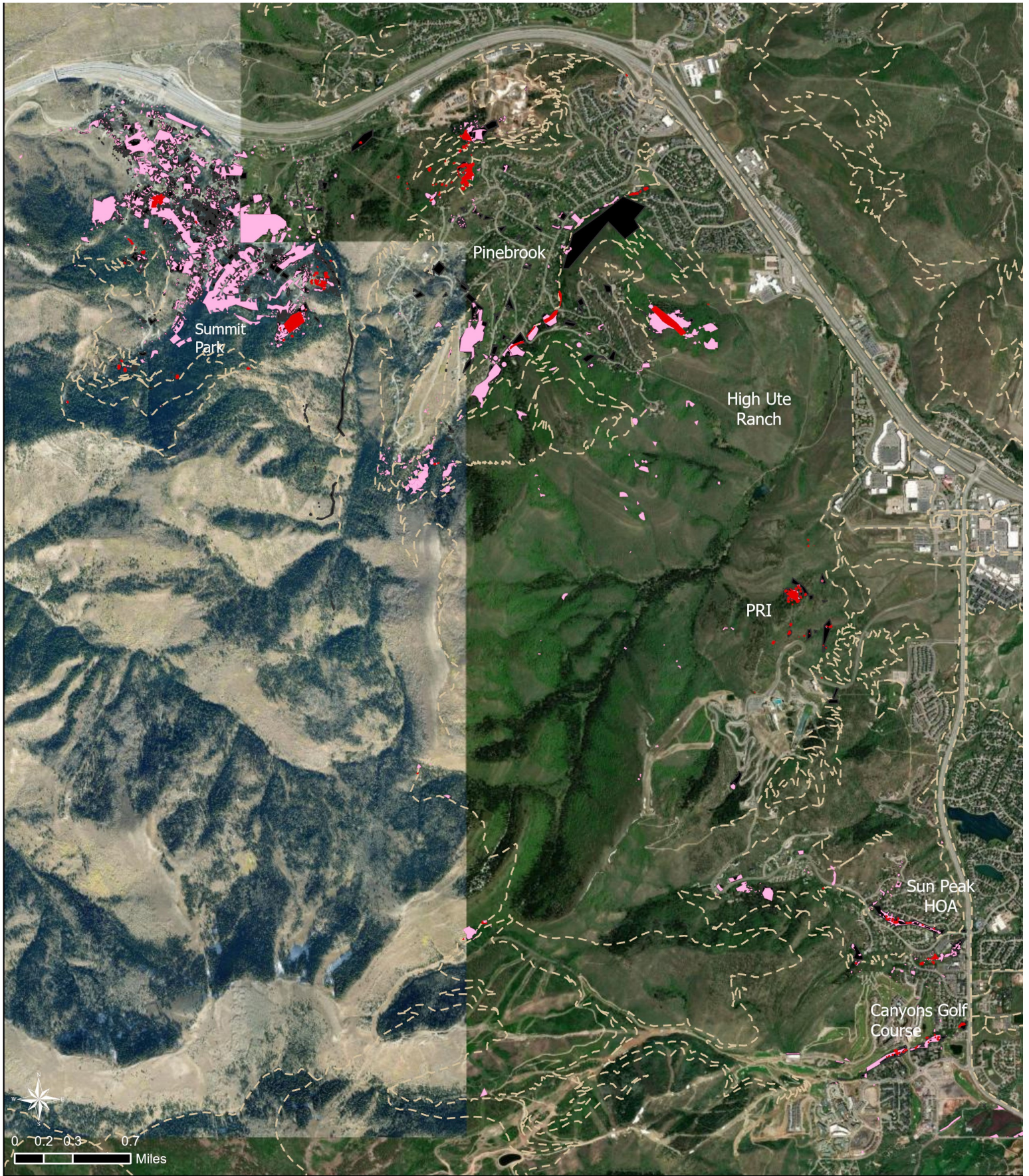
Grant and partner matches for the ISM Grant for the 2025 growing season.

Funding Source	Descriptions	Match Value
UWSA Grant	Portion of the cost to inventory of trails between Pinebrook, Canyons Resort and Park City Mountain	\$ 3,600.00
Park City Municipal Corporation	Inventory and control of garlic mustard and other noxious weeds with in the Low Elevation Garlic Mustard Program Areas	\$ 30,000.00
Snyderville Basin Special Rec Dist.	Inventory and control of garlic mustard and other noxious weeds with in the High Elevation Garlic Mustard Program Areas - Summit Park Open Space, PRI	\$ 12,491.00
Summit County Noxious Weed Division	Labor for garlic mustard control, County weed books, Presenting at weed trainings	\$ 2,425.00
Volunteer Hours	Treatment by volunteers	\$ 2,200.00
Misc Businesses	Volunteer program prizes and food donated by several businesses.	\$ 3,200.00
Total		\$ 53,916.00

HIGH ELEVATION GARLIC MUSTARD CONTROL PROGRAM: 4 YEAR PLAN

Garlic mustard control began in 2010 as a partnership between the Summit CWMA, Salt Lake County and the Salt Lake Watershed. Garlic mustard has been treated using hand weeding, mulching, herbicide and restoration. Since the program began, thousands of acres of garlic mustard have been treated. The Summit CWMA partners with the Summit County Weed Department to hold two free noxious weed trainings annually, and, as of 2023, the CWMA runs three volunteer programs to incentivize community participation in weed control: the Garlic Mustard Games, the Noxious Weed Ambassador Program, and Hounds Against Houndstongue when funding allows.

2023	INVENTORED 287 Acres	MONITORED 4 sites	<ul style="list-style-type: none"> • DuraCor Trials • Toll Canyon Seed Trials • Toll Canyon and Upper Evergreen Dr Transects
	CONTROLLED 90 Acres	SEEDED 41 acres	<ul style="list-style-type: none"> • Summit Park Open Space - No Worries Trail, Parkview Dr trailhead
	THINNED .12 Acres	New - Thinning of overgrown riparian vegetation in the Canyons Village to increase access to garlic mustard populations that have previously gone untreated because crews could not physically reach them.	
	OUTREACH	<ul style="list-style-type: none"> • 1 KPCW appearance, 1 Park Record article • New - Noxious Weed Ambassador Program including a Spanish translation • New - Hounds Against Houndstongue Event 	
2024	INVENTORIED 91 Acres	MONITORED 301 Acres, 4 sites	<ul style="list-style-type: none"> • Toll Canyon Seed Trials, DuraCor Trials, Organic herbicide trials • Toll Canyon and Upper Evergreen Dr Transects
	CONTROLLED 64 Acres	SEEDED 2	<ul style="list-style-type: none"> • 2 maintained acres
	THINNED 0 Acres	None	
	OUTREACH	<ul style="list-style-type: none"> • 2 KPCW appearances, 1 Park Record article • All 3 volunteer programs • Created noxious weed identification and treatment trifold (English & Spanish) 	
2025	INVENTORIED 123 Acres	MONITORING GOAL 249 Acres, 4 Sites	<ul style="list-style-type: none"> • Organic herbicide trials • 3 sites: Toll Canyon, Upper Evergreen Dr, Crescent Ridge
	CONTROLLED 329 Acres	RESTORATION 0 Acres	<ul style="list-style-type: none"> • 6 monitored acres
	THINNED 0.1 Acres	Access improved to McLeod Creek populations	
	OUTREACH	<ul style="list-style-type: none"> • 1 KPCW appearances, 1 Park Record article, 2 Town Lift articles • 2 volunteer programs • Outdoor Recreation Stewardship Award 	
2026	INVENTORY GOAL - 80 Acres	MONITORING GOAL	<ul style="list-style-type: none"> • Final monitoring of Organic Herbicide Trials • 3 sites: Toll Canyon, Upper Evergreen Dr, Crescent Ridge • Remap No Worries Trail area, Canyons Golf Club riparian strip, Rotary Park, Armstrong population, Glenwood Cemetery,
	CONTROL GOAL - 300 Acres	RESTORATION GOAL	<ul style="list-style-type: none"> • maintained acres
	THINNING GOAL - .05 Acres	Additional goal to reassess program priorities based on updated monitoring data during the 2026 season to ensure containment to WUI goals are being met.	
2027	INVENTORY GOAL - 100 Acres	MONITORING GOAL	<ul style="list-style-type: none"> • 2 sites: Toll Canyon and Upper Evergreen Dr Transects
	CONTROL GOAL - 300 Acres	RESTORATION GOAL	<ul style="list-style-type: none"> • 2 new acres, 5 maintained acres
	THINNING GOAL - .1 Acres	TBD based on 2026 reassessment	



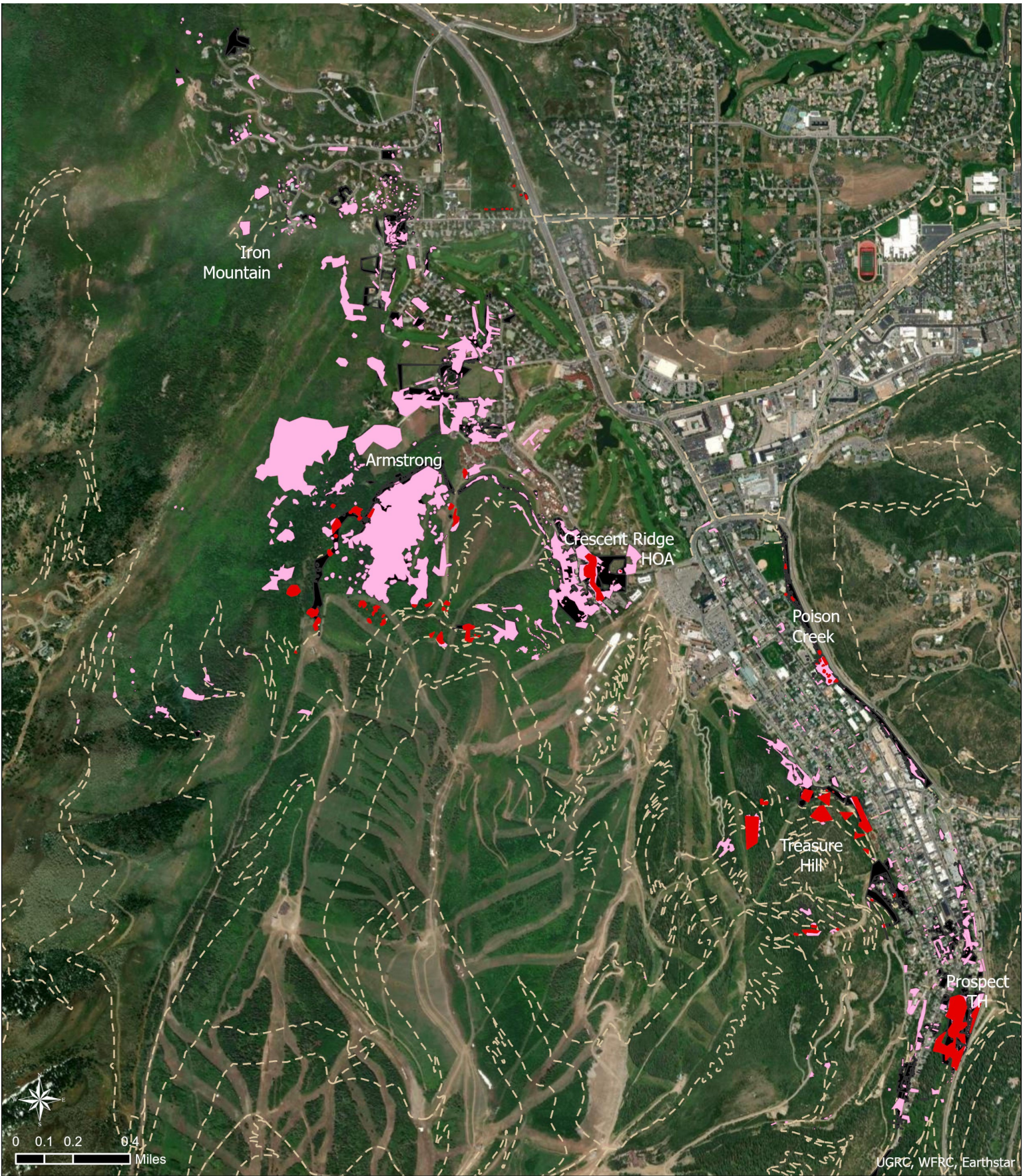
**Summit CWMA 2025 ISM Report
High Elevation Garlic Mustard Program
Snyderville Basin Area**

Mapped garlic mustard populations and the 2025 and historic treatment locations.

- 2025 Treated**
- Garlic Mustard
- 2025 Known**
- Garlic Mustard
- High Elev Garlic Mustard Historic Treatment**
- High Elev Garlic Mustard Historic Treatment
- Trails**
- - - Trails



Created 2/10/2026
Sara Jo Dickens, PhD
Ecology Bridge LLC
jo@ecologybridge.com



UGRC, WFRC, Earthstar

Summit CWMA 2025 ISM Report
High Elevation Garlic Mustard Program
Park City Area

Mapped garlic mustard populations and the 2025 and historic treatment locations.

- 2025 Treated**
- Garlic Mustard
- 2025 Known**
- Garlic Mustard
- High Elev Garlic Mustard Historic Treatment**
- High Elev Garlic Mustard Historic Treatment
- Trails**
- - - Trails



Created 2/10/2026
 Sara Jo Dickens, PhD
 Ecology Bridge LLC
 jo@ecologybridge.com