

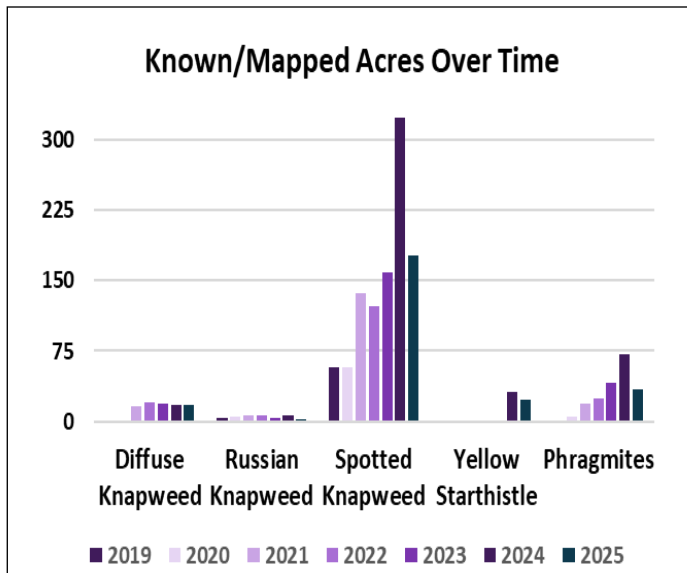
# Summit CWMA Knapweeds, Starthistle & Phragmites 2024 ISM Control Program Report

January 2025

Prepared By: Ecology Bridge LLC  
Sara Jo Dickens, PhD

## PROJECT OVERVIEW

The Summit CWMA Knapweeds, Starthistle, and Phragmites Control Program targets spotted (*Centaurea stoebe*), diffuse (*Centaurea diffusa*) and Russian knapweeds (*Rhaponticum repens*), common reed/ Phragmites (*Phragmites australis*) and yellow starthistle (*Centaurea solstitialis*). All species except spotted knapweed remain at distribution levels where eradication is possible. Spotted knapweed may still be eradicable in some areas of Summit County, though other areas have reached containment thresholds. Many mapped populations in western Summit County occur on private property and are spreading to public lands, making cross-jurisdictional partnerships essential for effective control and prevention. This project facilitates these partnerships while supporting control efforts and community outreach.



Acres of targeted weeds appear to have plateaued and spotted knapweed and phragmites, even declining. However this decline is due both to treatment caused reduction and, to a lesser extent, a mass effort to clean up data duplications and overlap that had accumulated over the past 15 years.

## METHODS

The Summit CWMA uses inventory, mapping, herbicide application, biological control, revegetation, and monitoring to manage noxious weeds, alongside community outreach to increase noxious weed awareness and control.

Inventory work determines weed extent beyond known boundaries, focusing on high-risk spread areas like ski slopes, trails, waterways and new developments for knapweeds and starthistle, and upstream/downstream from known sites for Phragmites. Monitoring serves to recheck populations, assess revegetation, and evaluate treatment effectiveness.

Chemical control is the primary method, applied during rosette, flowering, and pre-dormant stages using Milestone for knapweeds and starthistles and AquaNeat for Phragmites. Mechanical control is reserved for preventing seed spread at small or inaccessible patches. For Phragmites, this involves cutting live biomass and removing dead material to improve herbicide effectiveness, though labor costs limit this approach.

Biological control (weevil species: *Cyphocleonus Achates*, *Larinus minutus*) is used for large diffuse and spotted knapweed populations in sensitive areas or where steep terrain makes herbicide application dangerous. Biological control agents are supplied by Summit County Weed Division and Utah Weed Supervisors Association when available.

Revegetation to reduce reinvasion is used in areas where noxious weeds have been significantly reduced. Establishment of native grasses in these areas allows continued control with selective herbicide while facilitating native plant community reestablishment. Native forbs and woody species are used to a limited



*Left: Ecology Bridge and Deer Valley Resort staff sorting seed feeding weevils during the annual knapweed biological control collection day hosted by Amber Mendenhall and the Utah Weed Control Association. Right: Average weekly haul from a less used Noxious Weed Ambassador program volunteer station.*

degree to further increase noxious weed invasion resistance and improve pollinator habitat.

### OUTREACH

Outreach efforts include the Summit CWMA website, social media, community training, and the Noxious Weed Ambassador Program. The Ambassador Program uses trail-side volunteer stations that provide tools and identification guides for mechanical control, with volunteers entering biweekly prize drawings sponsored by local businesses. In 2025, volunteers pulled over 300 pounds of weeds, primarily common burdock, houndstongue, and thistles. In 2025, Silver King Coffee, Park City MARC, Ol' Miner Express Car

Wash, Park City Films and the Salt Lake Brewing Company donated gift certificates to help incentivize volunteer participation.

### RESULTS

Inventory and retreatment were reduced in 2025 due to funding cuts. The CWMA did not receive ISM funding, however UWSA Noxious Weed Grant, a Park City Rotary Club grant, local businesses and funding from CWMA partners helped to partially fill the gap. Specifically, Summit County covered the majority of the cost to inventory for and control for yellow starthistle both on 910 Ranch but also the few small populations within western Summit County. An



2018



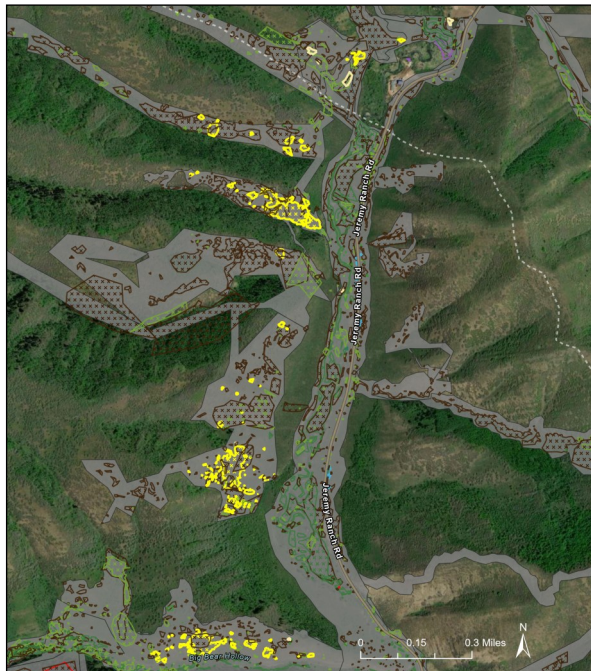
2025

*Diffuse and spotted knapweed of Treasure Hill, an area treated annually since 2018, has been reduced to less than 10% cover on most of the slope with small pockets of cover between 30-50% cover. These photos are the two slopes that converge 3/4th the way down and were equally invaded in 2018 and have experienced similar reductions.*

*Total acres treated including all weeds divided into the last half of State FY2025 and first half of State FY 2026*

	Acres Inventoried	Acres Monitored	Acres Mechanical	Acres Herbicide
Jan - June 30	50	90	0	12
July - Dec 31	215	33	0.1	90
<b>Total in 2025</b>	<b>265</b>	<b>123</b>	<b>0.1</b>	<b>102</b>

additional 135 acres of Canada and musk thistle, white top, common burdock and houndstongue were also treated by Summit County on the 910 Ranch. The county continued to treat roadside knapweed and Phragmites along with the relatively new Phragmites population in lower Summit Park. The Utah Olympic Park has reduced their noxious weed cover significantly over the last five years and is now able to cover most of the costs of knapweed and Phragmites control the CWMA and Summit County previously helped treat. Summit County continues to assist with many roadside populations.



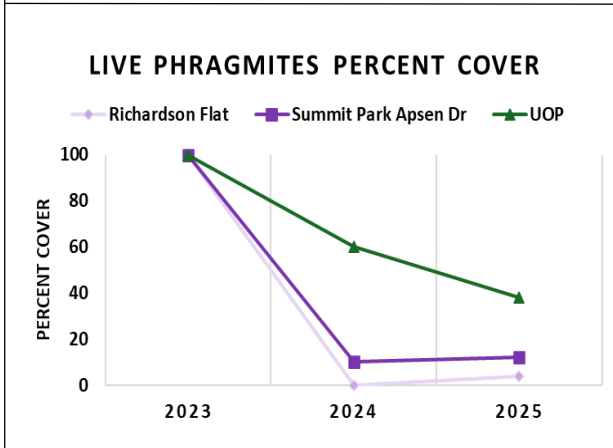
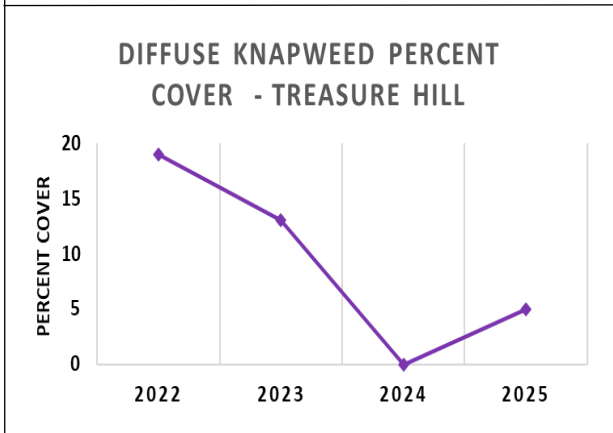
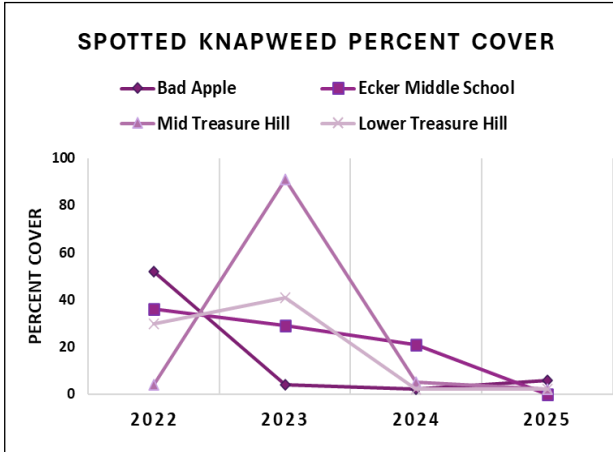
*Yellow polygons are yellow starthistle, those in solid grey are areas that have been inventoried. Remaining colors are other noxious weed species with Houndstongue, and Canada and musk thistle being most common.*



*Biological release site for spotted knapweed up Willow Draw in the Canyons Ski Resort*

Park City Municipal Corporation paid for inventory and treatment of noxious weeds on several miles of trails that cross management jurisdictional boundaries on Treasure Hill in Park City. They additionally treated the majority of spotted and Russian knapweed on their and neighboring properties, along with 297 acres of Canada and musk thistle, dyers woad, dalmatian toadflax, perennial pepperweed and white top within areas of and adjacent knapweed populations and lower elevation open space lands (Round Valley, Mc Pollin Farm, Quarry Mountain, Boot Hill and northern Clark’s Ranch).

Snyderville Basin Special Recreation District continues to treat the majority of their knapweeds and Phragmites. They also treat 73 acres of Dyers woad, dalmatian toadflax, musk thistle, Canada thistle, and white top within the more knapweed prone open space such as Bad Apple trailhead, Spring Creek trail, Silver Creek, Williams Property, and Amenti. In addition to weed control on their property they covered treatment of several acres of spotted knapweed at the Ecker Hill Middle School site to ensure treatment remained consistent annually and prevent knapweed spread onto newly established trails adjacent to the Ecker Hill site.



*Transects were established in 2022 to track knapweed and in 2023 to track Phragmites. Spotted knapweed percent cover has continued to decline to near 0% while diffuse knapweed increased slightly. Phragmites continues to decline in the Utah Olympic Park, stays stable in Summit Park and increased just slightly at Richardson Flat. All but the Richardson Flat populations have substantial dead biomass accumulation.*

With State FY2025 funding, UWSA Noxious Weed Grant, a local Park City Rotary Club grant, and the considerable increase in support of partners in 2025, 266 acres were inventoried for these five species, approximately 123 acres of previously mapped populations were monitored, 83 acres were treated and 0.4 acres revegetated. Additionally, approximately 4 locations of spotted knapweed biological control agents and 2 locations of Canada thistle biological control agents were released in 2025.

The most concerning discovery of 2025 was an additional 5 plus acres of yellow starthistle on the 910 ranch. A total of 366 acres were inventoried on the ranch specifically for yellow starthistle based on slope, aspect and soils. As of 2025, it does not appear that the yellow starthistle has crossed Jeremy Ranch Road. Given the substantial recreational trails system and favorable site conditions on the east side of Jeremy Ranch Road, ensuring starthistle does not cross this road will be critical to limiting its spread to regional trail systems. Equally important will be determining whether starthistle has spread further north on rangelands of Morgan County just north of 910 Ranch.

The Quarry Hill and Rail Trail populations of yellow starthistle have remain eradicated while the smaller populations (a few hundred feet or less) scattered within western Summit County have not expanded or are also shrinking. The Deer Valley Café population has been reduced to less than 50 plants and was treated early season with herbicide and hand removal of new plants in the fall followed by soil amendments plus reseeding of remaining bare areas. Unfortunately, during the fall visit to this site, we discovered someone had mowed along the paved walkway adjacent to the population and mowed over yellow starthistle plants. It is possible some were holding seed. All the obvious potential land managers of the site were contacted, however it was determined that a landscaping crew hired by one of the local HOAs had done the mowing. The landscape company has not been identified as of



*Mowed edge of yellow starthistle population with plants in flower and seed.*

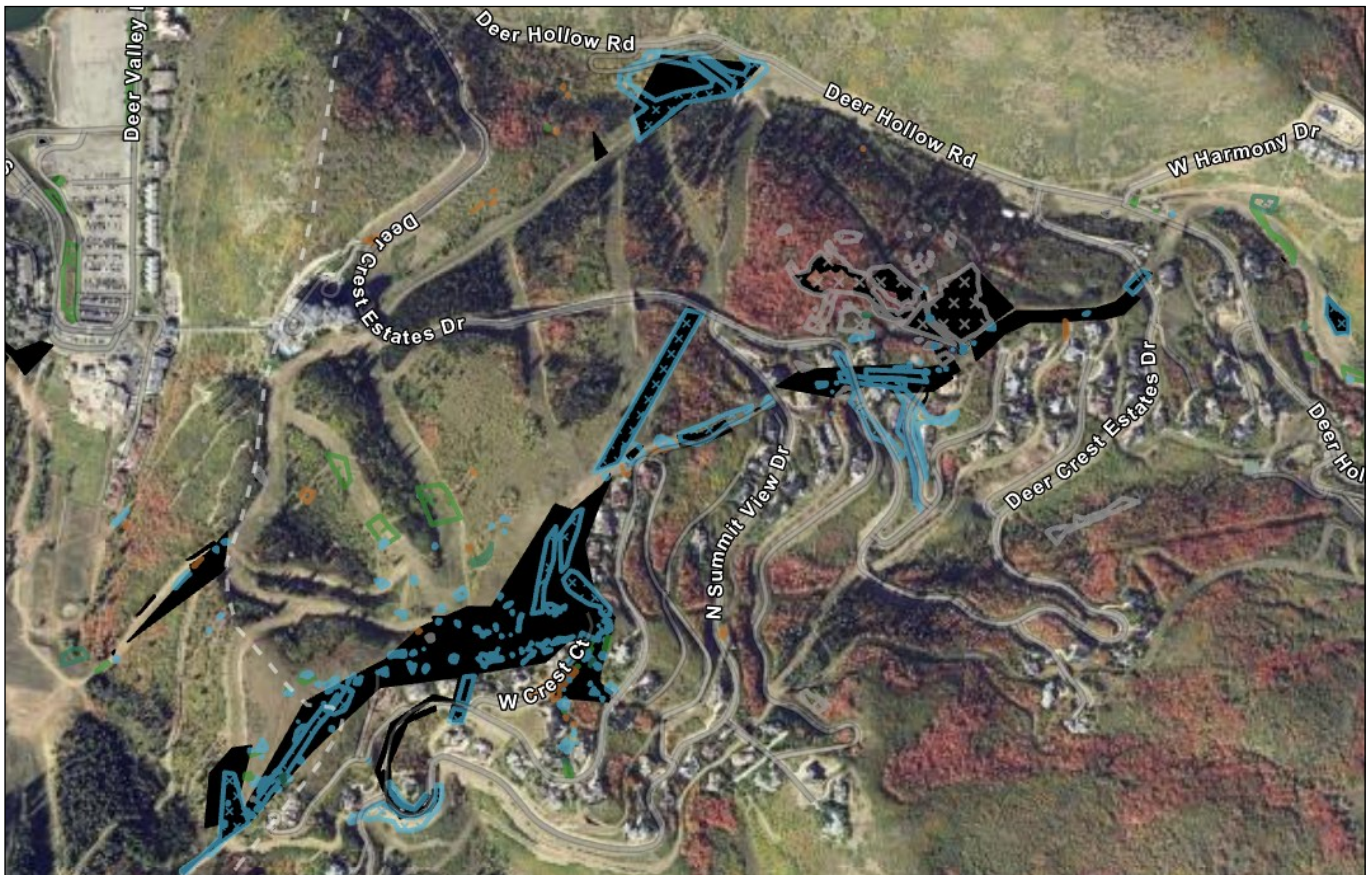
yet, but this highlights the need for better education of landscape companies regarding noxious weeds and their management.

New populations of all three knapweeds and Phragmites were mapped in 2025, however much

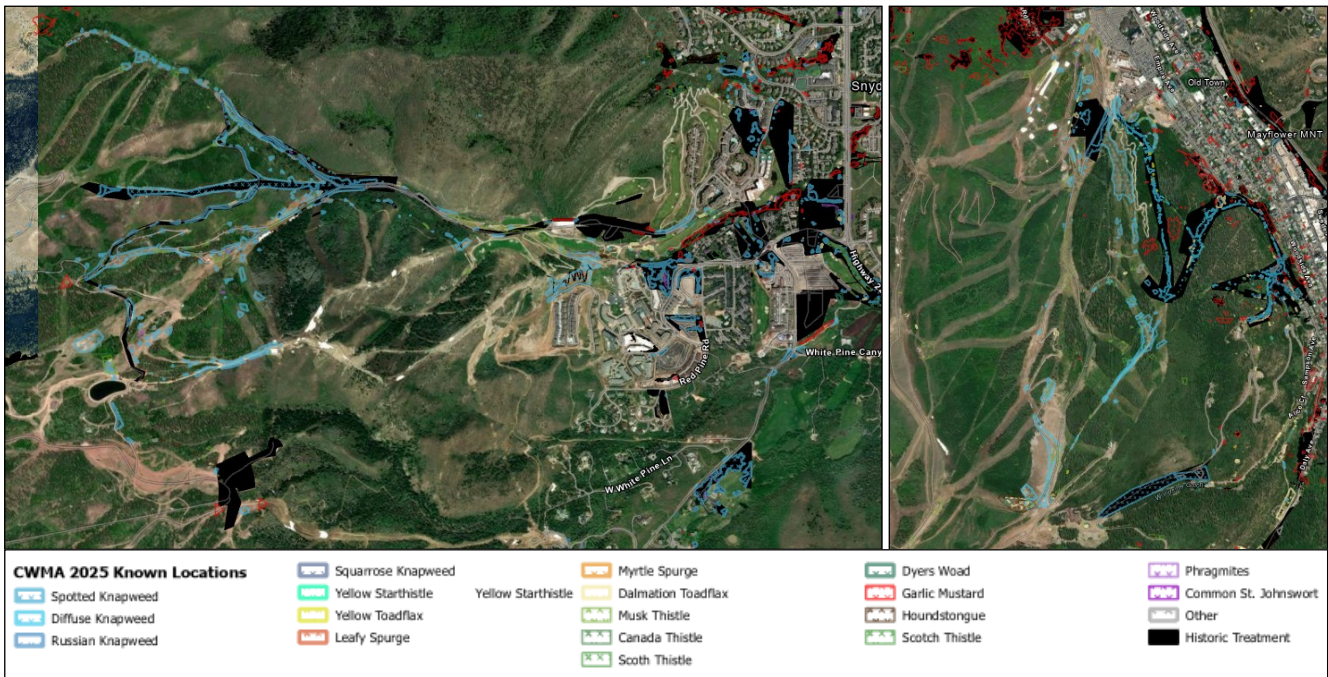
fewer than was found in previous years. Overall mapped acres of spotted knapweed and Phragmites were significantly lower in 2025, which was in part due to monitoring of declined populations, but was

also a result of a massive effort to remove any duplicate and overlapping weed polygons that had accumulated in the dataset over the last 15 years. This data clean up also removed overlapping yellow starthistle polygons that slightly reduced the total yellow starthistle acres project wide.

Overall, knapweed and Phragmites sites that have been receiving consistent treatment have significantly declined in both percent cover and distributions. The ski slopes of Deer Valley Resort, the two slopes of Park City Mountain Resort on Park City's Treasure Hill and The East Canyon Creek trail system from the East Canyon Creek Trailhead to Bad Apple Trailhead have had the most dramatic spotted knapweed reduction. Deer Valley Resort has been partners in control efforts with the Summit CWMA for nearly 10 years which has more than halved the distribution and percent cover of spotted knapweed on Deer Valley lands.



*Areas in Black are the historic distribution of spotted knapweed at the Deer Valley Resort and areas in blue are the current populations. The reduction of spotted knapweed at Deer Valley accounts for a large portion of the decline in mapped spotted knapweed in our project area.*



*Left: Portion of the Canyons Resort and the Canyons Golf Course. Right: Portion of Park City Mountain Resort. The majority of mapping completed on these resort properties has been done through Summit CWMA grants that focus on knapweeds, phragmites, yellow toadflax and garlic mustard which means these species are mapped, however other noxious weeds have gone mostly unmapped. The full extent of noxious weeds is unknown, but with renewed efforts by Vail Resorts, this data is being collected and greater treatment efforts underway. That said, many years of CWMA run control has resulted in the major decline in knapweeds at the Canyons Golf Course and the two ski runs of Treasure Hill.*

An area of growing concern has been the diffuse and spotted knapweed on Park City Mountain Resort and Canyons Resort ski runs and Phragmites at the Canyons Resort and Golf Course. In 2025, Summit County, Park City and Summit CWMA, with support from UDAF, began meeting with Vail Resort and Canyons Golf Course to establish working agreements and expedite the development of management plans for both resorts. In the meeting with Park City, the city committed to treatment of noxious weeds on trails of Treasure Hill, a city owned open space parcel that Vail Resort ski runs pass through. Vail committed to changing their mowing schedule for these slopes to discontinue mowing when knapweed plants are in seed and to work towards treating weeds on the ski runs. Following biweekly meetings with the Summit County Weed Enforcement Agent, the CWMA, Vail staff and Canyons Golf Course staff, the draft weed management plans have been created and Vail

conducted significant weed treatments on both resorts with a total of 40 acres of knapweed treated. The weed management plan will be reviewed and improved upon annually. The Resort also established an annual budget, which gives hope this work will continue in the future. With direction from the Summit County Weed Enforcement Agent, the



*Volunteers at a Park City Mountain volunteer weed pull removing thistle and houndstongue August 2025*



*Dan Pena, Summit County Weed Enforcement Officer providing advisement to Scott Norden, Canyons Golf Course.*

Canyons Golf Course has reassessed their herbicide and rates to more efficiently target noxious weeds and spray more regularly.

Phragmites control was primarily conducted by Summit County, Snyderville Basin and Park City in 2025. While there has been spread, the rate of spread to new locations is slow and populations consistently treated are declining.

## FINANCIALS

The Summit CMWA was not awarded funding for the 2026 state fiscal year (July 1, 2025 - June 30, 2026). The remaining \$13,288.48 from the 2025FY grant allowed treatments through June 30, 2025, however treatment that occurred after that date was funded by program partners. While these contributions by partners may not be sustainable over multiple years, they ensured consistent treatment occurred in high priority areas, even when those area were not on their property. The program work was matched by a Utah Weed Supervisors Grant that contributed \$6,400, a Park City Rotary Club Community Grant

## PROJECT PARTNERS

- ◆ Canyons Golf Course
- ◆ Deer Valley Resort
- ◆ Ecology Bridge
- ◆ Park City Municipal Corporation
- ◆ Park City School District
- ◆ Park City Rotary Club
- ◆ Pinebrook Master HOA
- ◆ Rockport State Park
- ◆ Snyderville Basin Special Recreation Dist.
- ◆ Snyderville Basin Water Reclamation Dist.
- ◆ Summit Center
- ◆ Summit County
- ◆ Summit Park HOA
- ◆ Swaner EcoCenter
- ◆ Utah Department of Agriculture and Food
- ◆ Utah Olympic Park
- ◆ Utah Pollinator Program
- ◆ Utah State University Extension
- ◆ Vail Resorts



*Phragmites population of the Utah Olympic Park two years post biomass removal and herbicide application.*

that contributed \$500 and partner matches that equal \$ ###. These partner matches included donation of gift certificates to incentivize volunteers, contracted and in-house staff labor for inventory, monitoring, weed control and revegetation and technical support of the revived Vail resort weed management program. These matches were critical to keeping the program running in 2025 and additional assistance will be needed to ensure earlier summer treatments and the Noxious Weed Ambassador Program are

implemented in 2026. In addition to weed control matches, the Utah Pollinator Program provided native plants that were planted at the Round Valley Pond. Access to locally sourced native plant material is difficult limited making the plants the Utah Pollinator Program provided not only valuable for ensuring enough plants were obtained but also ensuring we maintain local genetic diversity and appropriate native pollinator forage.

Yellow Starthistle, Knapweed and Phragmites ISM Expenses Jan - June 31, 2025				
Contractor/ Vendor	Line Item	Description	Invoice Number	Expense
Summit County	Chemical	Milestone for partner use	149336	\$219.00
GoBiochar	Supplies	Biochar	1256	\$300.00
Ground Solutions	Herbicide Contractor	Treatment of Russian Knapweed, Yellow starthistle and spotted knapweed	Part of EB235	\$3,200.00
Ecology Bridge	Administration	Field and research photo organization, updating ED-DMaps data	2025-077	\$2,121.90
	GIS Specialist	Adding data, data clean up and verification, creation of maps for report	2025_077	\$268.40
	General Labor	Revegetation for yellow starthistle at DV Café population		\$46.80
	Inventory	Inventory for Knapweed at Willow Creek,		\$3,379.13
	Monitoring	Monitoring Virginia Mine Claim, Round Valley and Deer Valley Ski Slopes post 8 years of control, monitoring transects		\$3,832.00
	Crew Supervision	Creating treatment plans for herbicide crews		\$221.25
<b>Total</b>				

## In-kind Matches Yellow Starthistle, Knapweed and Phragmites Control Program 2025 Growing Season

Partner and donor matches for the 2025 growing season. Matches provided by Summit County 910 treatment, Park City Municipal Corporation, Snyderville Basin and Deer Valley are based on the portion of annual budget dedicated to lands in which the target species are common and their adjacent lands. This value includes treatment of all noxious weeds within the areas.

In Kind and Cash Matches		
Partner	Description	2025 Grant
Snyderville Basin Special Recreation District	Staff hours: Controlling and mapping noxious weeds	\$ 1,200.00
Snyderville Basin Special Recreation District	Contractor costs - mapping and weed control	\$ 18,298.49
Park City Municipal Corporation	Contractor costs - mapping and weed control, revegetation labor - all noxious weeds within the areas that our target species are currently mapped and adjacent lands.	\$ 50,000.00
Summit County	Contractor costs for mapping and control of yellow starthistle, knapweed and phragmites within 910 Ranch	\$ 30,275.50
Summit County	Biological Control - value of donated biocontrol (those given to Deer Valley and those to Summit CWMA and two releases at PCMR)	\$ 7,800.00
Summit County	Biological Control - staff hours to transport and release biocontrol agents	\$
Deer Valley Resort	Mapping and treatment of spotted knapweed and other noxious weeds on ski runs and access roads.	\$ 10,880.00
Vail Resort	Treatment of noxious weeds along Willow Draw of the Canyons Resort and the Base of PCMR along the alpine slide and guest ticketing areas.	\$ 8,900.00
Utah Olympic Park	Contractor costs - controlling noxious weeds on Park property	\$ 6,400.00
UWSA Noxious Weed Grant	Noxious Weed Control in the recreational area of Park City Mountain where a number of hiking and mountain bike trails merge	\$ 6,400.00
Park City Sunrise Rotary Club	Labor to install and maintain the Noxious Weed Ambassador volunteer boxes for half of the season.	\$ 500.00
Volunteers	Hand weeding through the Noxious Weed Ambassador Program	\$ 6,800.00
Utah Pllinator Habitat Program	Native plants for restoration of the Round Valley Pond site.	\$ 500.00
Silver King Coffee		\$
Park City MARC		\$
O'l Miner Car Wash		\$
Park City Films		\$
Salt Lake Brewing Company	Gift certificates to incentivize volunteer participation in the Noxious Weed Ambassador Program.	\$ 50.00
<b>Total</b>		<b>\$ 148,828.99</b>


**CANYONS GOLF COURSE REVEGETATION PROJECT**  
**SPOTTED KNAPWEED, MUSK THISTLE, DALMATIAN TOADFLAX**

The Canyons Golf Course berm adjacent SR224 had been dominated by spotted knapweed. 10 years of treatment reduced knapweed to less than 5% cover. In 2023, after removal of new noxious weeds, compost and biochar (4:1 ratio) was spread 3-5 inches thick and native seed applied. Additional soil amendment and seeding occurred in 2024 and by 2025, grasses are establishing. Bare ground remains present and musk thistle and dalmatian toadflax have invaded but are being controlled by the golf course. Assessment of the site in 2026 will determine next steps.



**BOO RADLEY ALLEY REVEGETATION PROJECT**  
**SPOTTED KNAPWEED**

A spotted knapweed population in the alley adjacent Boo Radley Art Park was reduced to below 20% after four years of treatment. Compost and biochar was applied and native grass seed was broadcasted in 2023. By 2024, portions of the site had thick native grass, however large patches remained unvegetated or invaded by new weeds (mainly Dyers woad and thistle) so weeds were hand removed and a second round of soil amendment and seed was applied to the patches in 2024. Additional grasses have established and ongoing weed management is underway.

 **ROUND VALLEY POND RESTORATION PROJECT**  
**RUSSIAN KNAPWEED**

Russian knapweed had dominated around the Round Valley pond. After three years of control with Milestone, hand-weeding, and raking away of dead knapweed plants, the site was below 5% cover of Russian knapweed. Native vegetation, did not recover and significant erosion was present.

In 2020, the pond was recontoured, the soil was amended with compost and biochar, and the full site was seeded with native grasses, wildflowers, native shrub seedlings, and narrowleaf cottonwood (*Populus angustifolia*) and willow canes were planted.

Russian knapweed cover remains below 5% and can be maintained with hand weeding. The site has experienced dense establishment of native grasses and sparse establishment of wildflowers. Rubber Rabbitbrush (*Ericameria nauseosa*). Willow canes, have successfully taken in 2 patches along the pond edge and 2 cottonwood and 1 dogwood have more than doubled in size since planting. In 2024, areas adjacent the original site and within the site were planted with native upland and wetland natives supplied by the Utah Pollinator Program to increase native plant diversity. Weed control has continued and is knocking back other noxious weeds, particularly Canada thistle and hoary cress in the adjacent areas. Additional planting and seeding occurred in 2025 to expand the restored area and increase plant diversity.



## DEER VALLEY REVEGETATION PROJECT YELLOW STARHISTLE

The historic population of yellow starthistle at the Deer Valley Café continues to persist, but at low percent cover (5%). Previous years of reseeding by Deer Valley staff had limited success. In 2024, the Summit CWMA partnered with Deer Valley Resort to bring in a compost-biochar blend to apply to a portion of the site to see if the soil is limiting native grass establishment. Additionally, some nitrogen fixing and early succession wildflowers were lightly seeded.



In 2025, areas receiving soil amendments the previous fall had significantly more native grass cover. Weedy species such as flixweed and tumble mustard invaded the site however were lower where native grasses are denser. Fall of 2025, the few remaining areas of bare ground and within areas where yellow starthistle is still present were treated with soil amendment and seed.

## **RESTORATIONS AT THE MONITOR AND MAINTENANCE TREATMENT STAGE**

### **MOVIE STUDIO REVEGETATION PROJECT 2019 - VIPER'S BUGLOSS**

Only limited, scattered bugloss plants remain and are manually removed annually. Native grasses have established and native forbs are creeping in from the edges. Further restoration is unnecessary at this site. There are, however, near by populations that have expanded in 2024 and control is on going.

### **CANYONS RESORT RESTORATION PROJECT 2020 - SPOTTED KNAPWEED**

Spotted knapweed remained less than 5% cover and native grasses established. Future development of a parking structures at this site will result in no further monitoring or reporting.

### **PINEBROOK REVEGETATION PROJECT 2019 - COMMON ST JOHNSWORT**

Common St Johnswort increased slightly in 2025 and was treated. Revegetation efforts resulted in a decent cover of native grasses and some native forbs. Other noxious weeds persist at the edges of the site and are controlled as funding allows.

### **FAIRWAY CONNECTOR REVEGETATION PROJECT 2020 - RUSSIAN KNAPWEED**

Only a few Russian knapweed plants were present in 2025 and were hand removed. Native grass, forbs and shrubs are establishing dense cover. Maintenance of the adjacent trail did result in disturbance to the site so monitoring in 2026 will be critical to prevent disturbance mediated knapweed reestablishment.

### **ROUND VALLEY DOG PARK AND ART INSTALLATION PROJECT 2020 - RUSSIAN KNAPWEED**

Russian knapweed remains eradicated at this site. Monitoring will continue for the foreseeable future as these sites are very accessible and near ongoing revegetation sites.

# Summit CWMA 2025 Yellow Starthistle, Knapweed and Phragmites ISM Report

## Snyderville Basin Area

Mapped noxious  
weeds, their  
treatment and  
biological control  
locations.

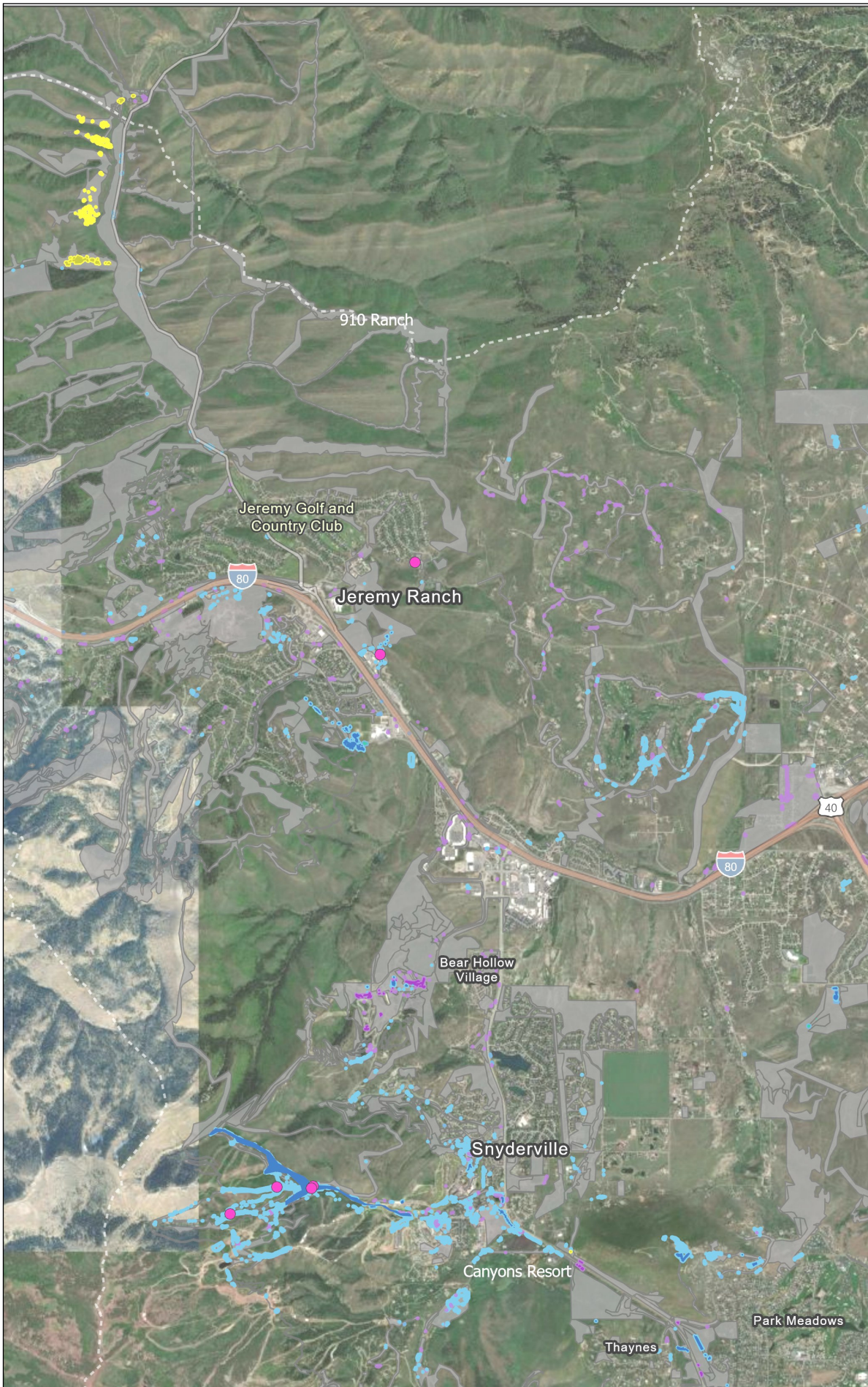


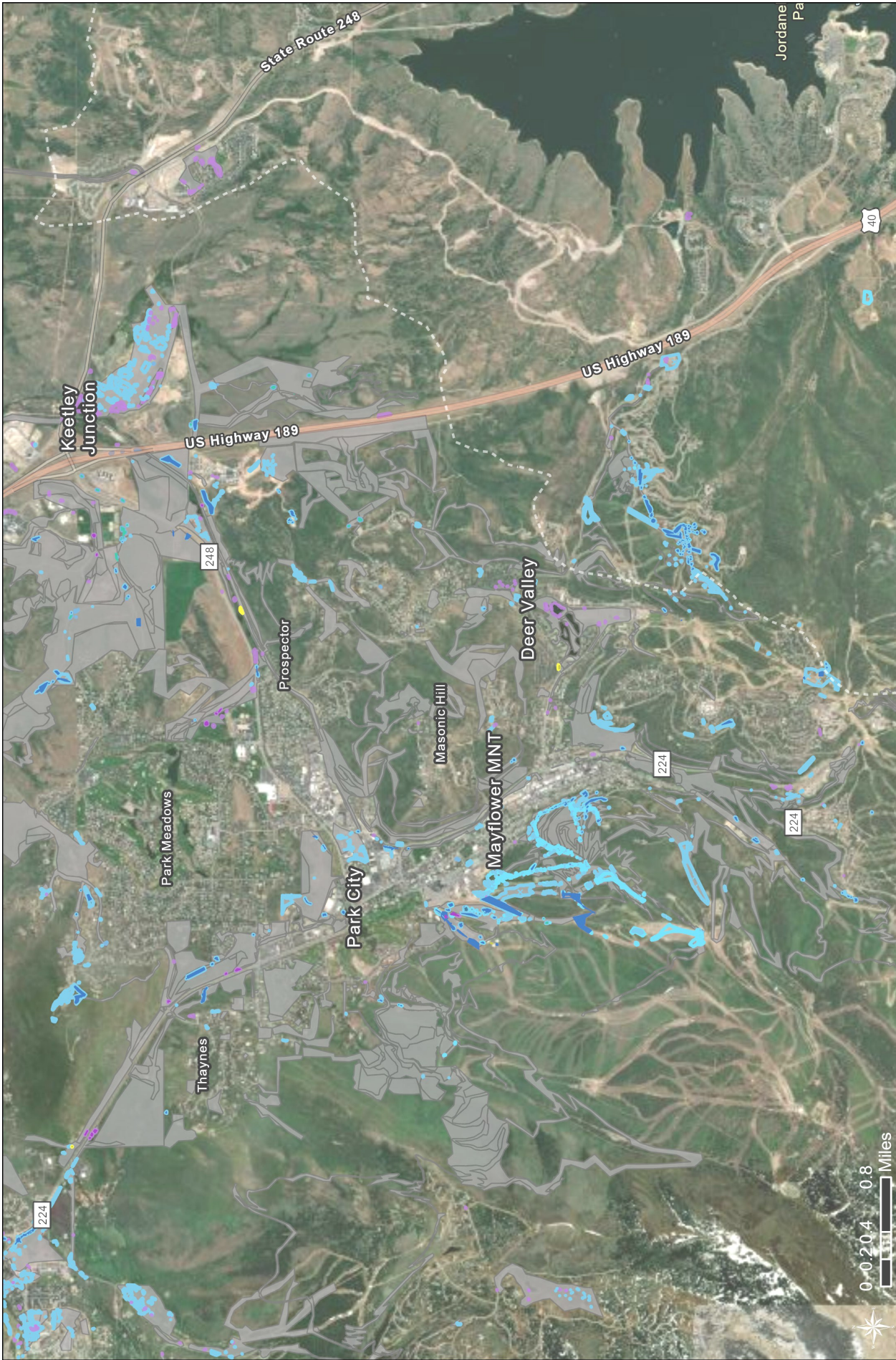
0 0.3 0.6 1.1  
Miles

- Biocontrol Releases 2025
  - CWMA 2025 Treatment Areas
  - Yellow Starthistle
  - Diffuse Knapweed
  - Spotted Knapweed
  - Russian Knapweed
  - Phragmites
- Noxious Weeds Locations
- Yellow Starthistle
  - Diffuse Knapweed
  - Spotted Knapweed
  - Russian Knapweed
  - Phragmites
  - Inventoried Areas

Sources: Esri, TomTom, Garmin, FAO, NOAA, USGS, (c) OpenStreetMap contributors, and the GIS User Community, Earthstar Geographics

Created 1/29/2026  
Sara Jo Dickens, PhD  
Ecology Bridge LLC  
jo@ecologybridge.com





**Summit CWMA 2025 ISM Report**  
**Yellow Starthistle, Knapweed and Phragmites**  
**Park City Area**  
 Mapped noxious weeds, their treatment and biological control locations.

- Biocontrol Releases 2025**
- Yellow Starthistle
  - Diffuse Knapweed
  - Spotted Knapweed
  - Russian Knapweed
  - Phragmites
- CWMA 2025 Treatment Areas**
- Yellow Starthistle
  - Diffuse Knapweed
  - Spotted Knapweed
  - Russian Knapweed
  - Phragmites

- Noxious Weeds Locations**
- Yellow Starthistle
  - Diffuse Knapweed
  - Spotted Knapweed
  - Russian Knapweed
  - Phragmites
  - Inventoried Areas

Sources: Esri, TomTom, Garmin, FAO, NOAA, USGS, (c) OpenStreetMap contributors, and the GIS User Community, Vantor

Created 1/29/2026  
 Sara Jo Dickens, PhD  
 Ecology Bridge LLC  
 jo@ecologybridge.com

# SUMMIT CWMA—SNYDERVILLE BASIN AND PARK CITY AREA STARHISTLE, KNAPWEEDS AND PHRAGMITES PROGRAM

The starthistle, knapweed and phragmites control program area primarily includes Western Summit County properties, but includes portions of Eastern Summit County as landowners contact the CWMA for assistance.

In 2019, the Summit CWMA began specifically mapping knapweeds and starthistle to better understand the distribution. Control began in 2020. Phragmites was added to the program in 2021.

In 2025, 265 acres of land were inventoried, 123 acres of previously mapped populations were monitored, 102 acres were treated, 6 biological control releases occurred and 0.4 acres were restored. New yellow starthistle populations discovered in 2024 are now known to cover 7 acres in 910 Ranch. The populations found in 2024 were treated in 2025 and all populations are targeted for treatment in 2026. A collaboration between UDAF, Summit County, Park City, Summit CWMA and Vail Resorts, resulted in draft weed management plans for both Vail resorts, better technical direction for the golf course and treatment of over 40 acres of noxious weeds.

Since 2018, 12,293 acres have been inventoried, and 23 acres of yellow starthistle (includes Jordanelle populations), 176 acres of spotted knapweed, 18 acres of diffuse knapweed, 2 acres of Russian knapweed, and 34 acres of Phragmites are currently mapped.

**CURRENT TRANSECT LOCATIONS:** Bad Apple Trailhead, Ecker Hill Middle School, Treasure Hill, Utah Olympic Park, Summit Park off Aspen Drive and Richardson Flat.

**CURRENT ACTIVE RESTORATION LOCATIONS:** Deer Valley Café, Round Valley Pond, The Canyons Golf Course, and the Boo Radley Trail.

	INVENTORY GOAL	MONITORING GOAL	TREATMENT GOAL	RESTORATION GOAL
2026	500 Acres Priorities: public trails, streams and open space as well as additional areas of 910 Ranch and in Morgan County just cross county line near 910 Ranch	4 Restorations 8 Transects	300 Acres	Maintain Previous Restorations, 910 Ranch Yellow Starthistle sites
2027	500 Acres	5 Restorations 8 Transects	250 Acres	Maintain and Enhance Previous Restorations
2028	400 Acres	5 Restorations 8 Transects	250 Acres	Maintain and Enhance Previous Restorations

2026

500 Acres  
Priorities: public trails, streams and open space as well as additional areas of 910 Ranch and in Morgan County just cross county line near 910 Ranch

4 Restorations  
8 Transects

300 Acres

Maintain Previous Restorations, 910 Ranch Yellow Starthistle sites

2027

500 Acres

5 Restorations  
8 Transects

250 Acres

Maintain and Enhance Previous Restorations

2028

400 Acres

5 Restorations  
8 Transects

250 Acres

Maintain and Enhance Previous Restorations